



21, Stoneway Walk, Bow

Offers in Excess of £675,000

2 Bedrooms

Spacious 760 sq.ft stunning first floor apartment offering high specification throughout. The property boasts a lovely bright open plan kitchen and reception with direct access out to a private balcony overlooking the Regents Canal.

Brand New Two Bedroom Apartment    Canal Side Development

Adjacent to Victoria Park    Excellent Transport Links

Look Property Services  
349 Roman Road  
Bow, London, E3 5QR

020 8981 9999  
info@lookproperty.co.uk

[lookproperty.com](https://www.lookproperty.com)

## Description

Spacious 760 sq.ft stunning first floor apartment offering high specification throughout. The property boasts a lovely bright open plan kitchen and reception with direct access out to a private balcony overlooking the Regents Canal. . There are two double bedrooms, one with en-suite & built in wardrobe plus a luxurious family bathroom. The development is within close proximity to Victoria Park village with its many bars, restaurants and shops. Mile End Station is just a short walk away.

## Tenure

Leasehold: New 125 Year lease

## Local Authority

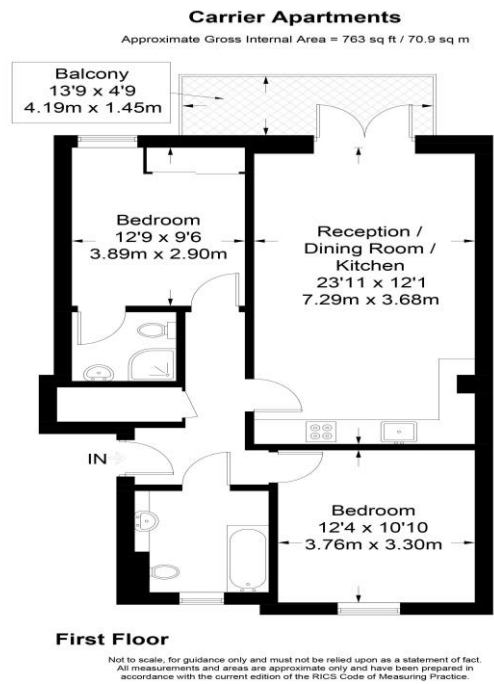
London Borough of Tower Hamlets

## Additional Information

Service Charge est: £1976.00 pa

Ground rent: £300.00 pa

## Viewings Strictly by appointment with



## IMPORTANT NOTICE

In accordance with the Property Misdescriptions Act (1991) we have prepared these sales particulars as a general guide to give a broad description of the property. They are not intended to constitute part of an offer or contract. We have not carried out a structural survey and the services, appliances and specific fittings have not been tested. All photographs, measurements, floorplans and distances referred to are given as a guide only and should not be relied upon for the purchase of carpets or any other fixtures or fittings. Lease details, service charges and ground rent (where applicable) are given as a guide only and should be checked and confirmed by your Solicitor prior to exchange of contracts. The copyright of all details, photographs and floorplans remain exclusive to Look Property LLP.